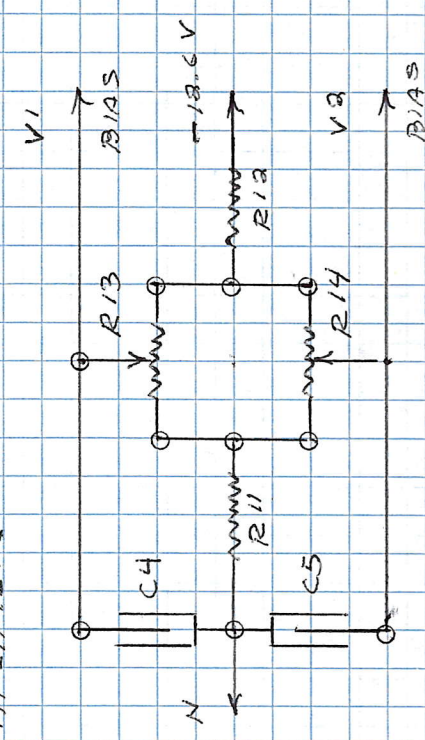


OUTPUT
AMPLIFIER



GRID BIAS NETWORK

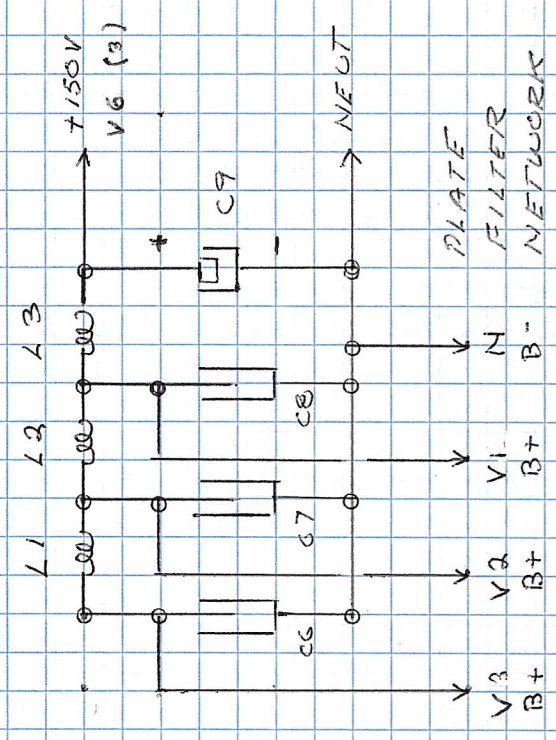
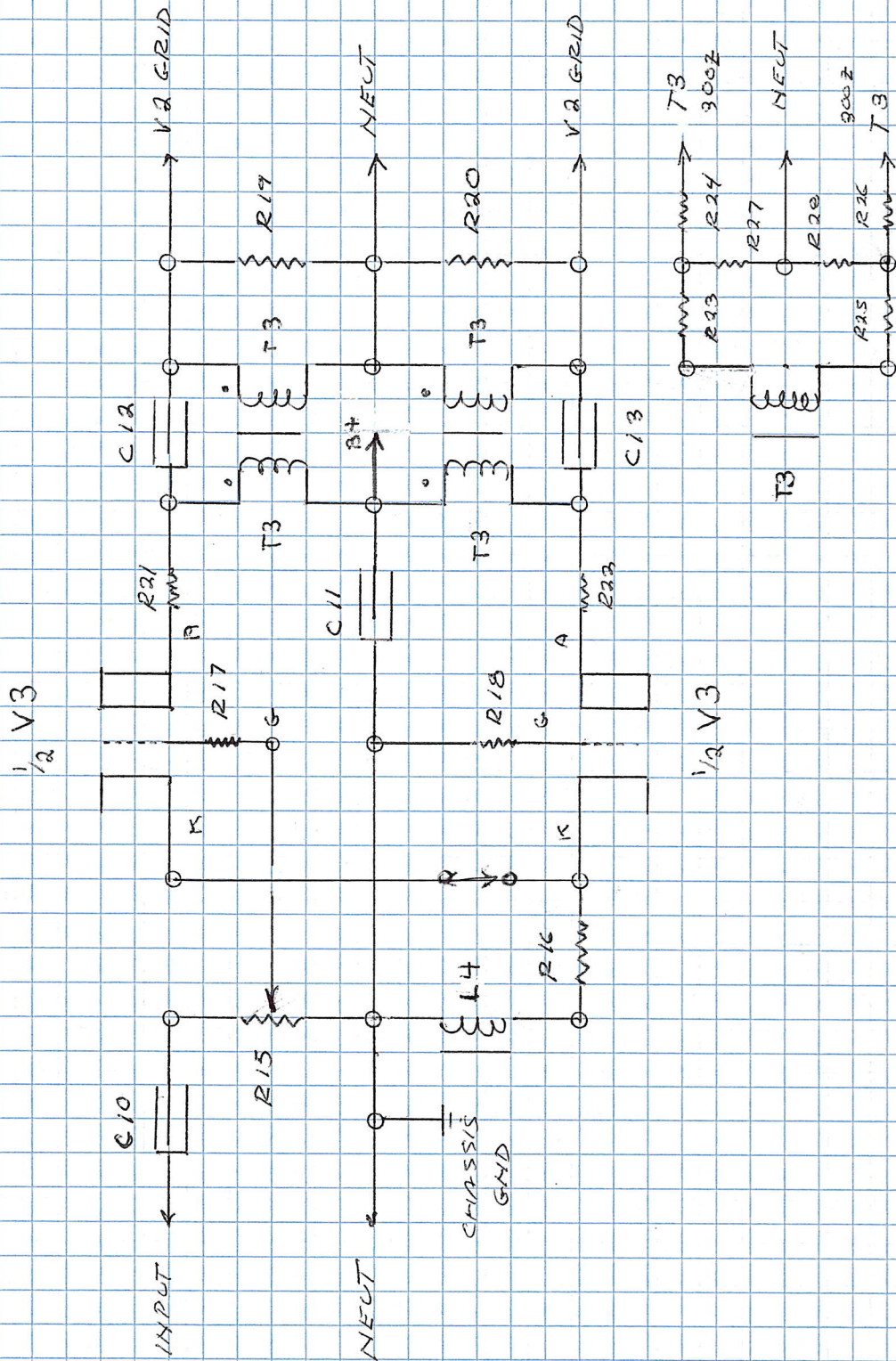


PLATE
FILTER
NETWORK

PHASE SPLITTING DRIVER AMPLIFIER



AMPLIFIER SUB-ASSEMBLY

CARBON COMPOSITION RESISTORS

R1, R4, R9, R10, R21, R22

33 OHM $\frac{1}{2}$ WATT

R3, R6, R7, R8

10 OHM $\frac{1}{2}$ WATT

R2, R5, R17, R18

470 OHM $\frac{1}{2}$ WATT

METAL FILM RESISTORS

R11 300 OHM $\frac{1}{2}$ WATTR12 500 OHM $\frac{1}{2}$ WATT

R19, R20 24,000 OHM 1 WATT

R23, R24, R25, R26, R27, R28

TO BE DETERMINED

AMPLIFIER SUB-ASSEMBLY

VARIABLE RESISTORS

R13, R14, 1000 OHM LINEAR TAPER
(R-VA 1 KL)

R15, 1 MEG OHM AUDIO TAPER
(R-VPEC-1MA)

METALLIZED PLASTIC CAPACITORS

C1, C2 (C-FT 47-250)

47 μ Fd 250 VOLT

C4, C8 (C-FT 10-250)

10 μ Fd 250 VOLT

C6, C7, C8 (C-FT 22-250)

22 μ Fd 250 VOLT

AMPLIFIER SUB-ASSEMBLY

C11, C3, CERAMIC CAPACITORS

0.05 μ Fd 500 VOLT

C9, ELECTROLYTIC CAPACITORS

220 μ Fd 300 VOLT

(C-ET 220-300-FT)

IMPEDANCE COIL

L4 15 HENRY, 0.015 AMP D.C.

20 Ω TO 20K Ω FREQUENCIES

MAXIMUM D.C. RESISTANCE

120 OHM

SERIES RESISTOR, R16

METAL FILM

R = 120 - COIL D.C. RES.

AMPLIFIER SUB-ASSEMBLY

OUTPUT TRANSFORMER

T1, 15 WATT AUDIO

20~ TO 20K~ FREQ

- 1) 6400 Z C.T. 35 mA DC
- 2) 600 Z C.T. 0 mA DC
- 3) 8 Z 0 mA DC

INTERSTAGE TRANSFORMER

T2, 15 WATT AUDIO

20~ TO 20K~ FREQ

- 1) 600 Z C.T 35 mA DC
- 2) 600 Z C.T 35 mA DC
- 3) 600 Z C.T 35 mA DC

ALL COILS: INDUCTANCE TO RESISTANCE RATIOS MUST EXCEED

$$L / R > 0.10 \text{ SECONDS}$$

AMPLIFIER SUB-ASSEMBLY

GRID DRIVE TRANSFORMER

T3 2 WATT AUDIO

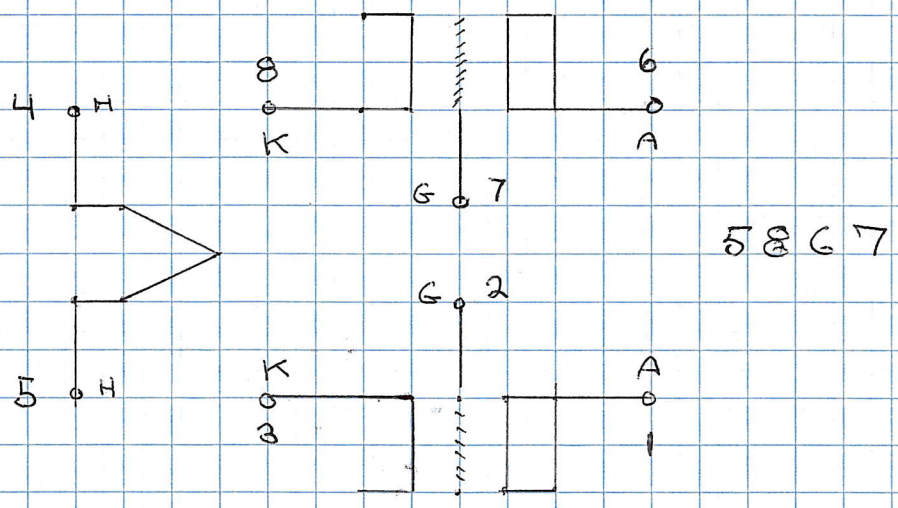
20~ TO 20K~ FREQUENCY RESPONSE

- 1) 30 K Ω CT 16 mA DC
- 2) 30 K Ω CT 16 mA DC
- 3) 600 Ω 0 mA DC

VACUUM TUBES

V1, DUAL TRIODE 58G7 WA

V2, DUAL TRIODE 58G7 WA

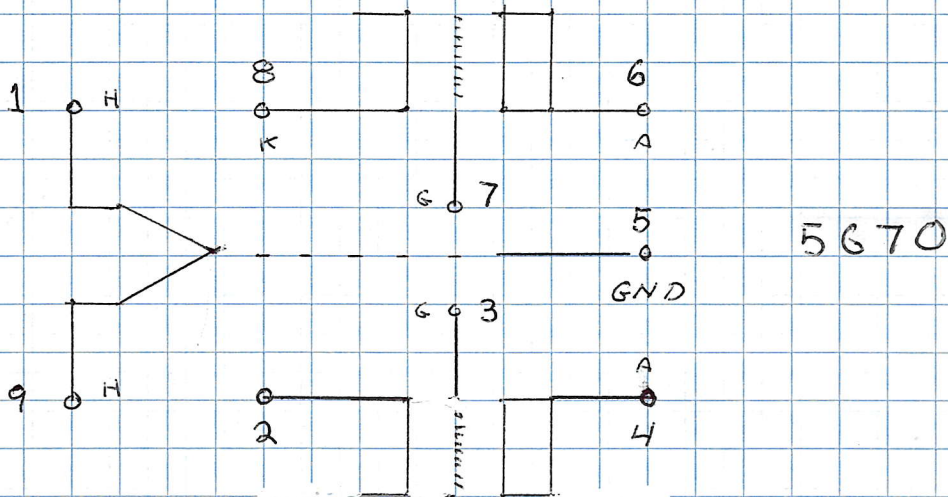


AMPLIFIER SUB-ASSEMBLY

VACUUM TUBES

V3 , DUAL TRIODE 5670 WA

V4 , DUAL TRIODE 5670 WA



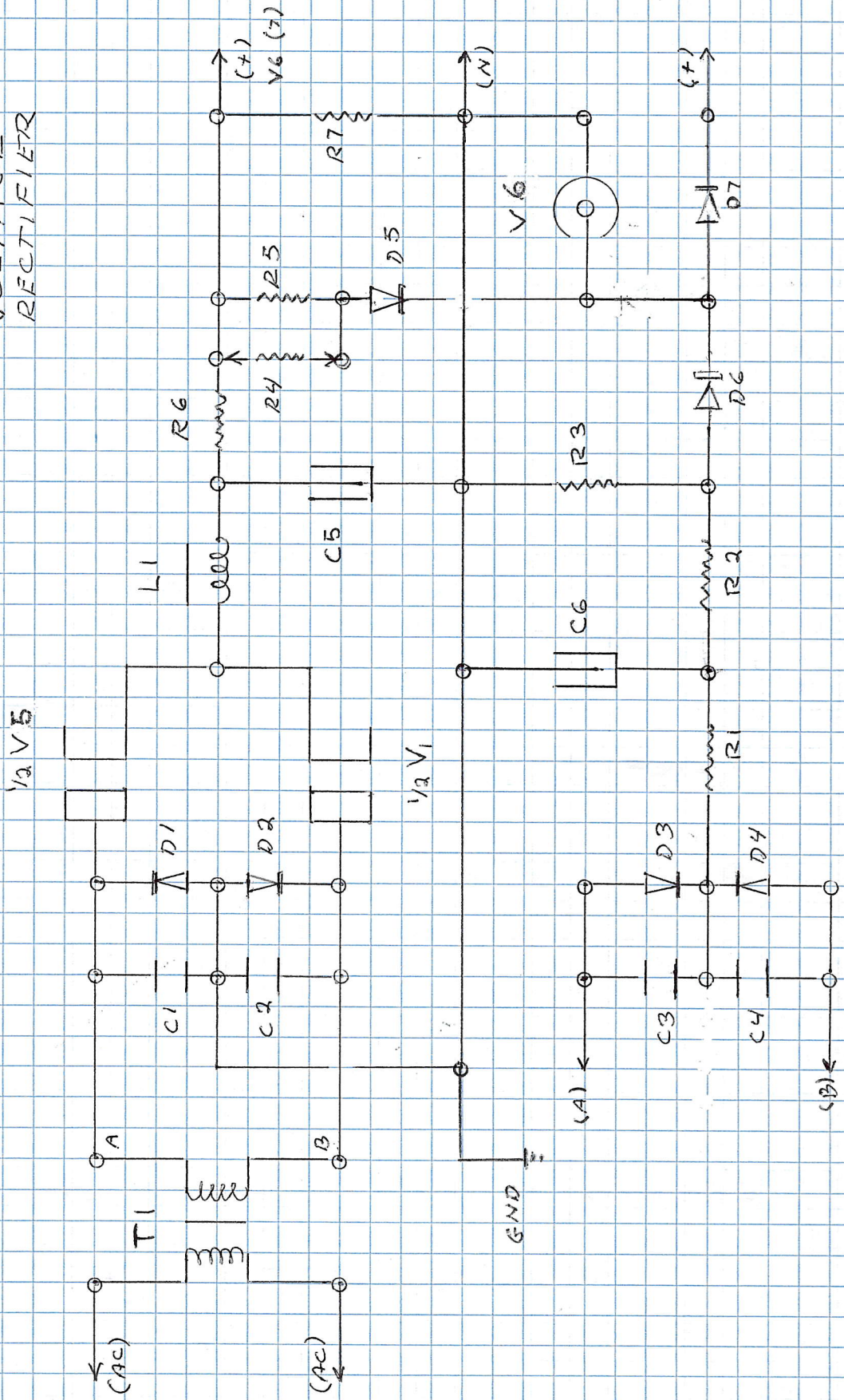
5670 HEATER DUMMY RESISTOR

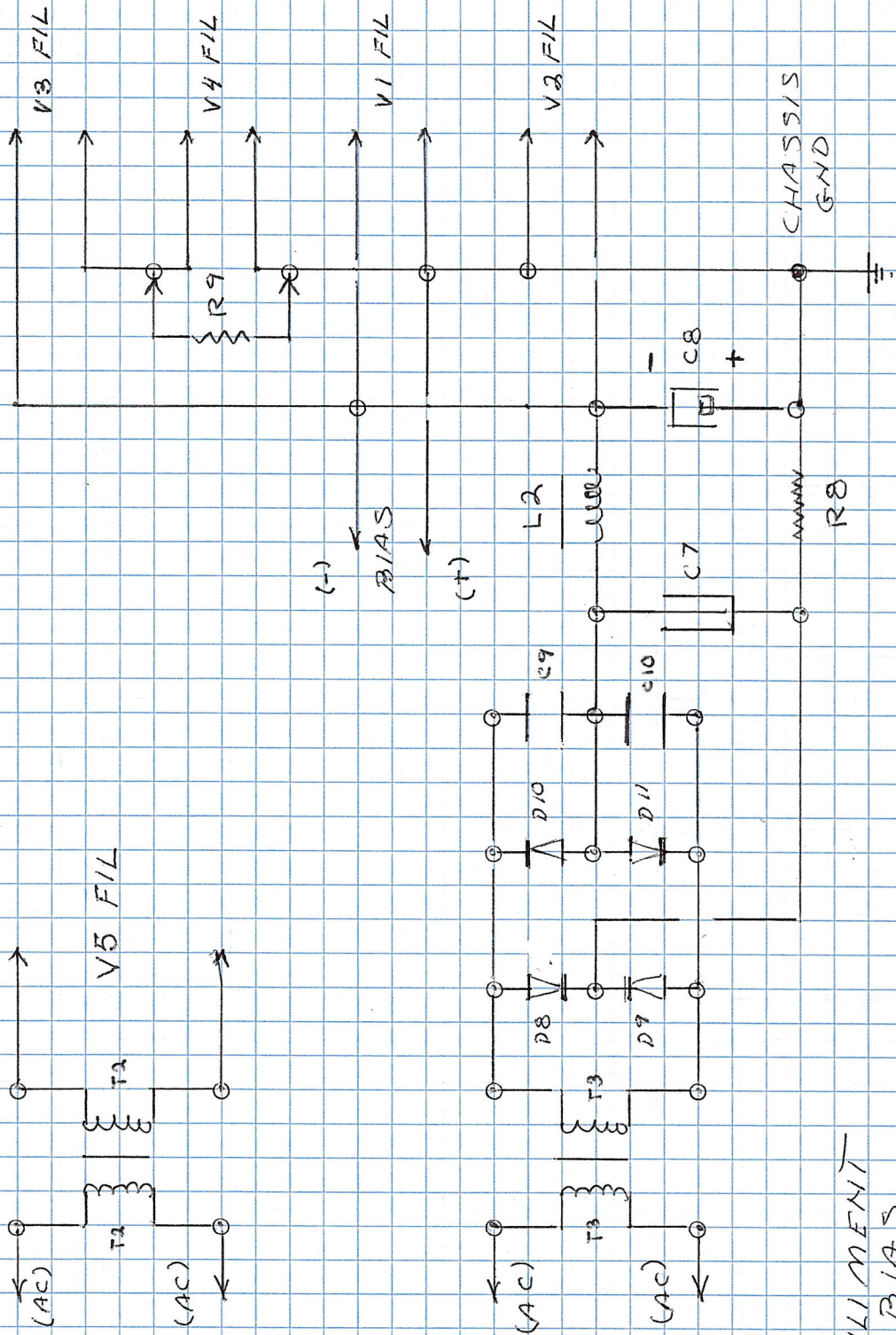
V4 HEATER 6.3 VOLT 0.35 AMP

R9 = 18 OHM 5 WATT

(ALL VT'S GENERAL ELECTRIC MFG)

PLATE
VOLTAGE
RECTIFIER





FILAMENT
& BIAS
VOLTAGE
RECTIFIER

RECTIFIER SUB-ASSEMBLY

WIRED WOUND RESISTORS

R1, 1000 OHM 1 WATT

R2, 7500 OHM 5 WATT

R3, 2000 OHM 10 WATT

R4, R6 TO BE DETERMINED

R8, TO BE DETERMINED

R9, 18 OHM 5 WATT

METAL FILM RESISTORS

R3, 150,000 OHM 2 WATT

R7, 100,000 OHM 1 WATT

SILICON RECTIFIERS

D1, D2, D3, D4, BRIDGE RECT

600 VOLT P.I.V. 500 mA DC

D8, D9, D10, D11, BRIDGE RECT

200 VOLT P.I.V., 2 AMP DC

RECTIFIER SUB-ASSEMBLY

CERAMIC CAPACITORS C1, C2, C3, C4

1000 pFd 1600 VOLT

C9, C10, 0.05 μ Fd 800 VOLT

OIL CAPACITORS

C5, C6, 4 μ Fd 400 VOLT D.C.

ELECTROLYTIC CAPACITOR

C8, 4700 μ Fd 55 VDC

(C-PV4700-55-A)

REACTANCE COILS

L1 10 Hy 0.15 AMP D.C.

(P-T193G)

L2 0.10 Hy 1.5 AMP D.C.

MAXIMUM D.C. RESISTANCE
OF ONE OHM

RECTIFIER SUB-ASSEMBLY

SILICON DIODES

D5, D6, D7, 400 VOLT PIV 500mA DC

FILAMENT TRANSFORMER, T1

120 VOLT PRI, 6.3 VOLT 1.2 AMP
SECONDARY

RECTIFIER TRANSFORMER, T2

120 VOLT PRIMARY

18 VOLT 2.0 AMP SECONDARY

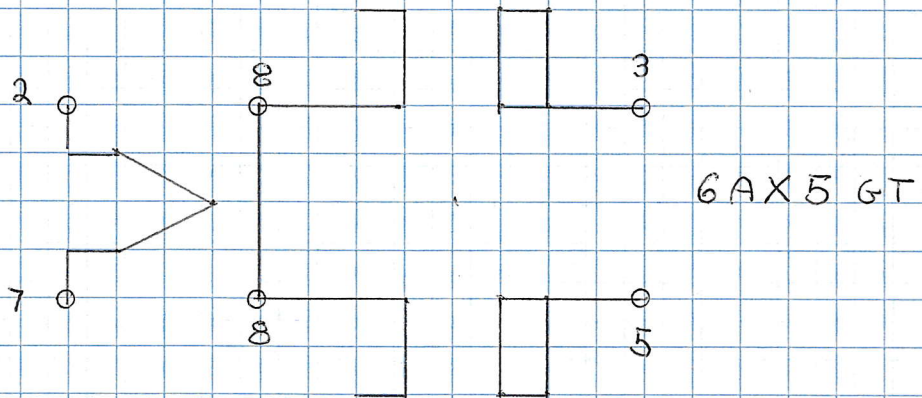
VACUUM TUBES

V5, 6AX5 DUAL DIODE

V6, 0D3, VOLTAGE REGULATOR

C7 TO BE DETERMINED

RECTIFIER SUB-ASSEMBLY



003 / VR-150

