

PYTHAGOREAN NUMEROLOGY OF THE MUSICAL SCALE



EPD LABORATORIES, INC.
PO BOX 10029
SPOKANE, WA 99209

info@epdlabs.org

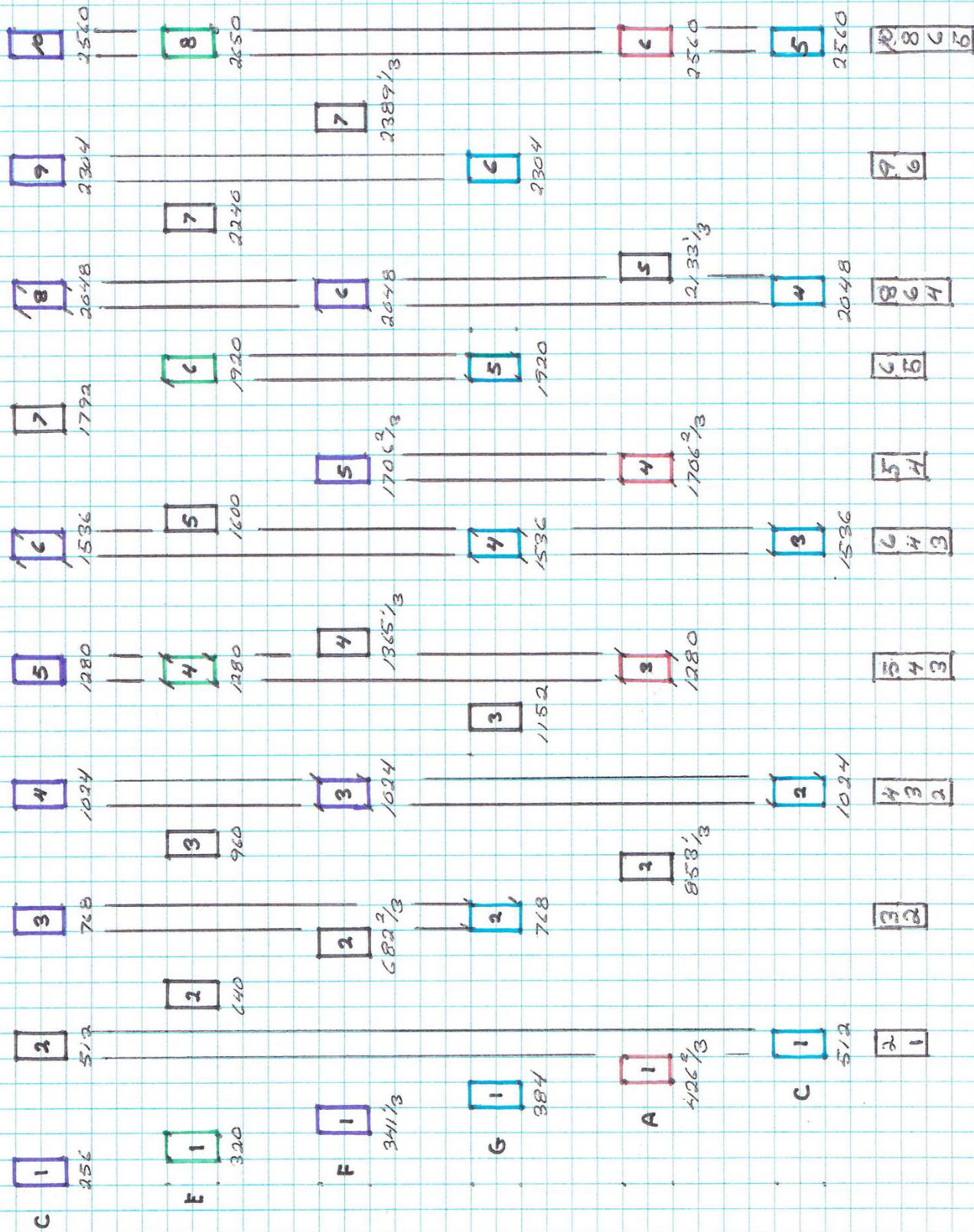
<http://ericpdollard.com>

SECTION 1

FREQUENCY PLAN

7-16

(1)



$F/G = 8$





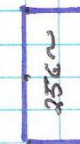
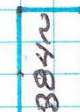
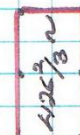
256 ~

85 $\frac{1}{3}$ ~

128 ~

170 $\frac{2}{3}$ ~

192 ~

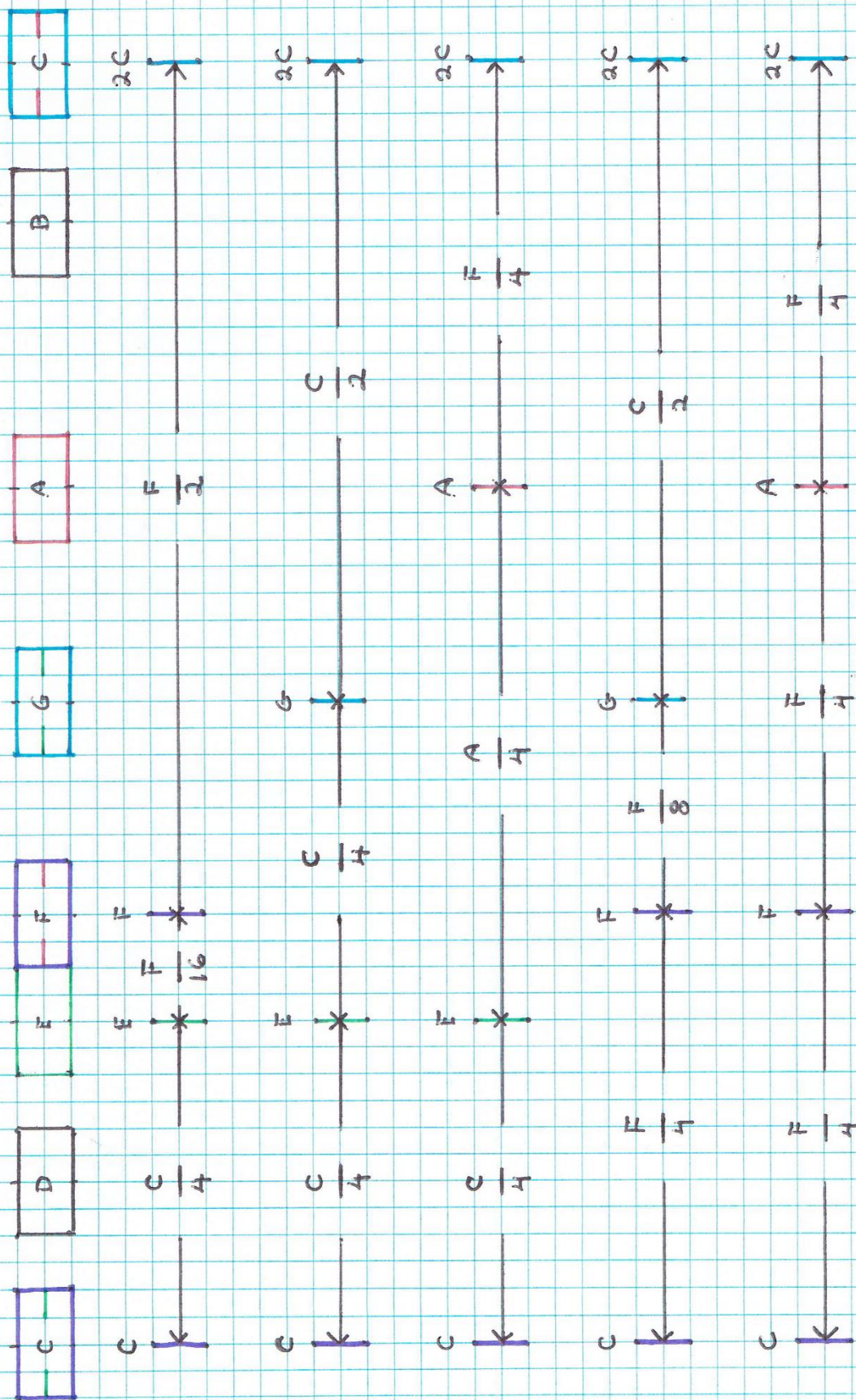


170 $\frac{2}{3}$ ~

128 ~

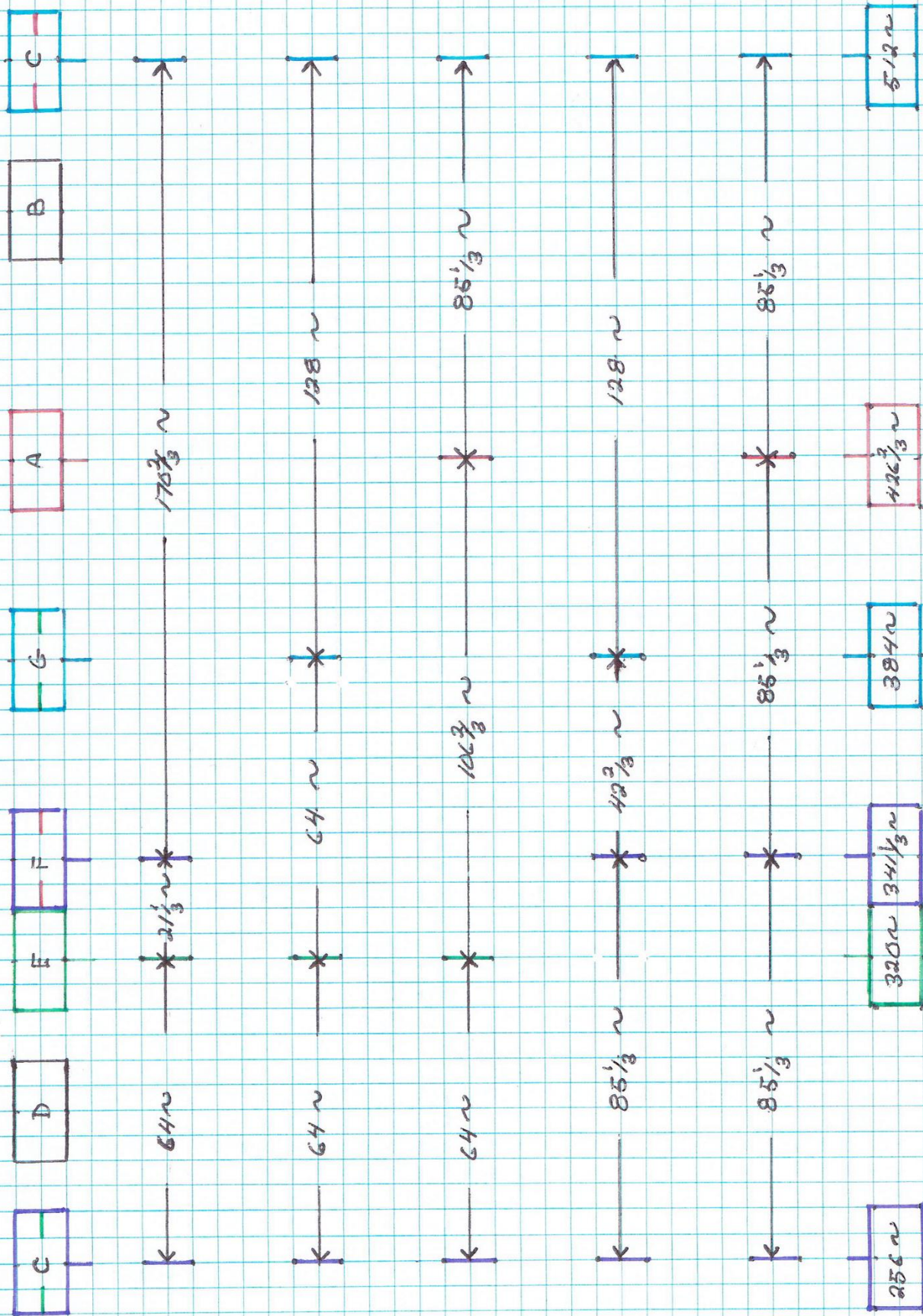
85 $\frac{1}{3}$ ~

64 ~



F/G II

6



1- $42\frac{3}{2}$

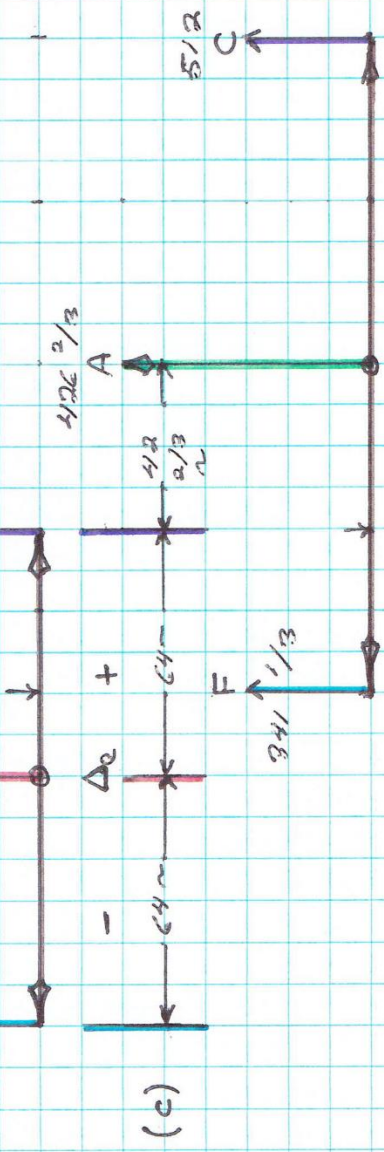
320

$E \leftrightarrow C = 192 \text{ (G)}$

250

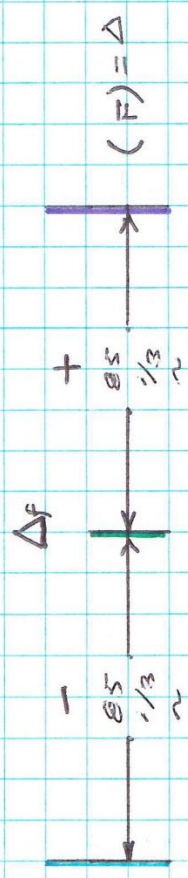
324

(F) mod 34 (C)



(c)

(A) mod 34 (F)



(F) = Δ



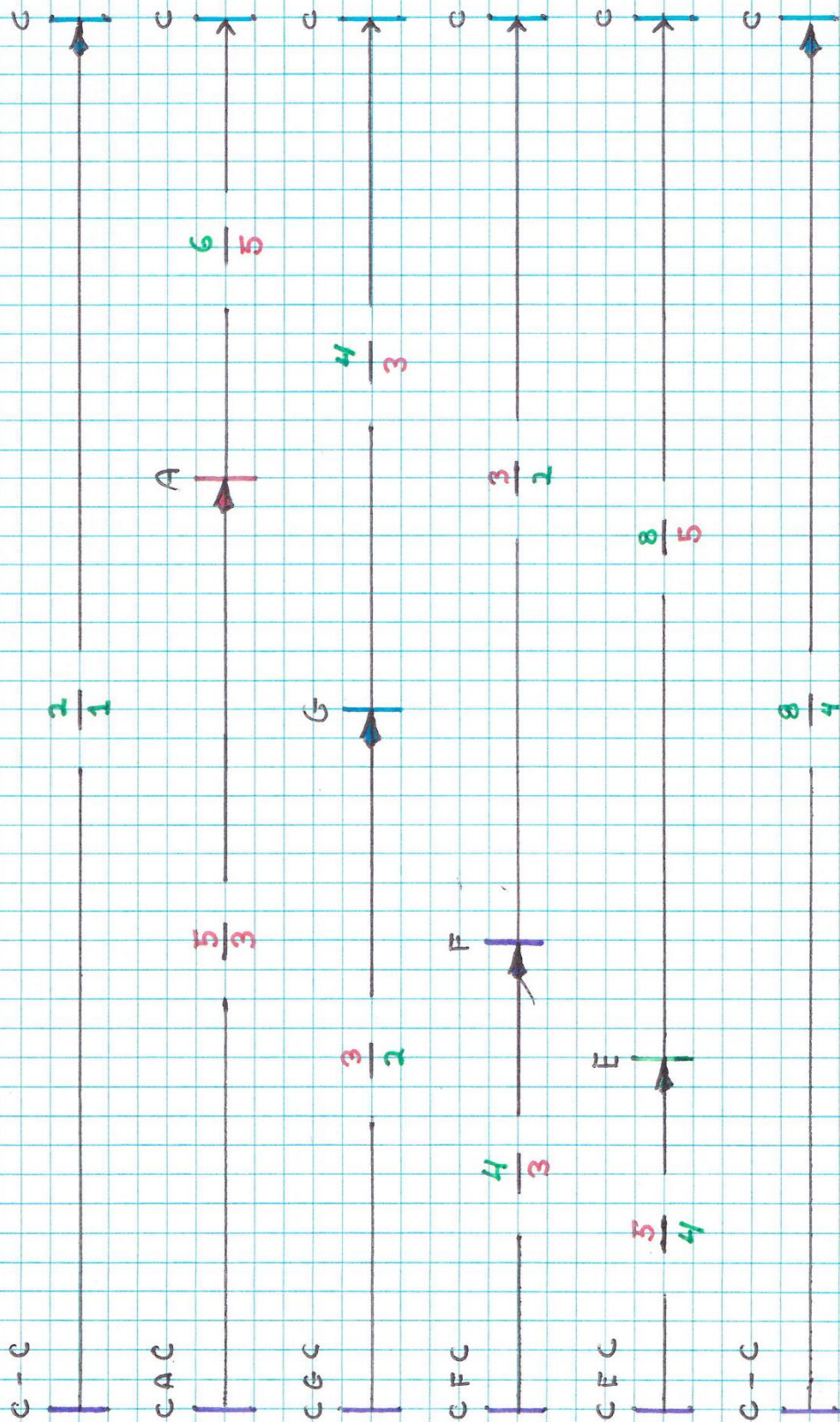
(G) mod 34 (C)

FIG - 13

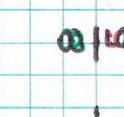
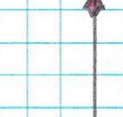
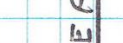
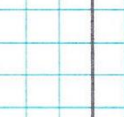
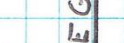
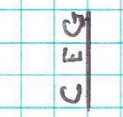
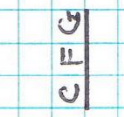
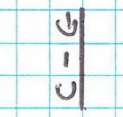
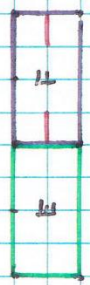
SECTION 2

INTERVAL PLAN

FIG-1



$1/6 - 2$



$\frac{3}{2}$

$\frac{4}{3}$

$\frac{5}{4}$

$\frac{EG}{C}$

$\frac{EGC}{C}$

$\frac{EAC}{C}$

$\frac{E \cdot C}{C}$

$\frac{9}{8}$

$\frac{6}{5}$

$\frac{16}{15}$

$\frac{3}{2}$

$\frac{4}{3}$

$\frac{4}{3}$

$\frac{6}{5}$

$\frac{8}{5}$

46-5

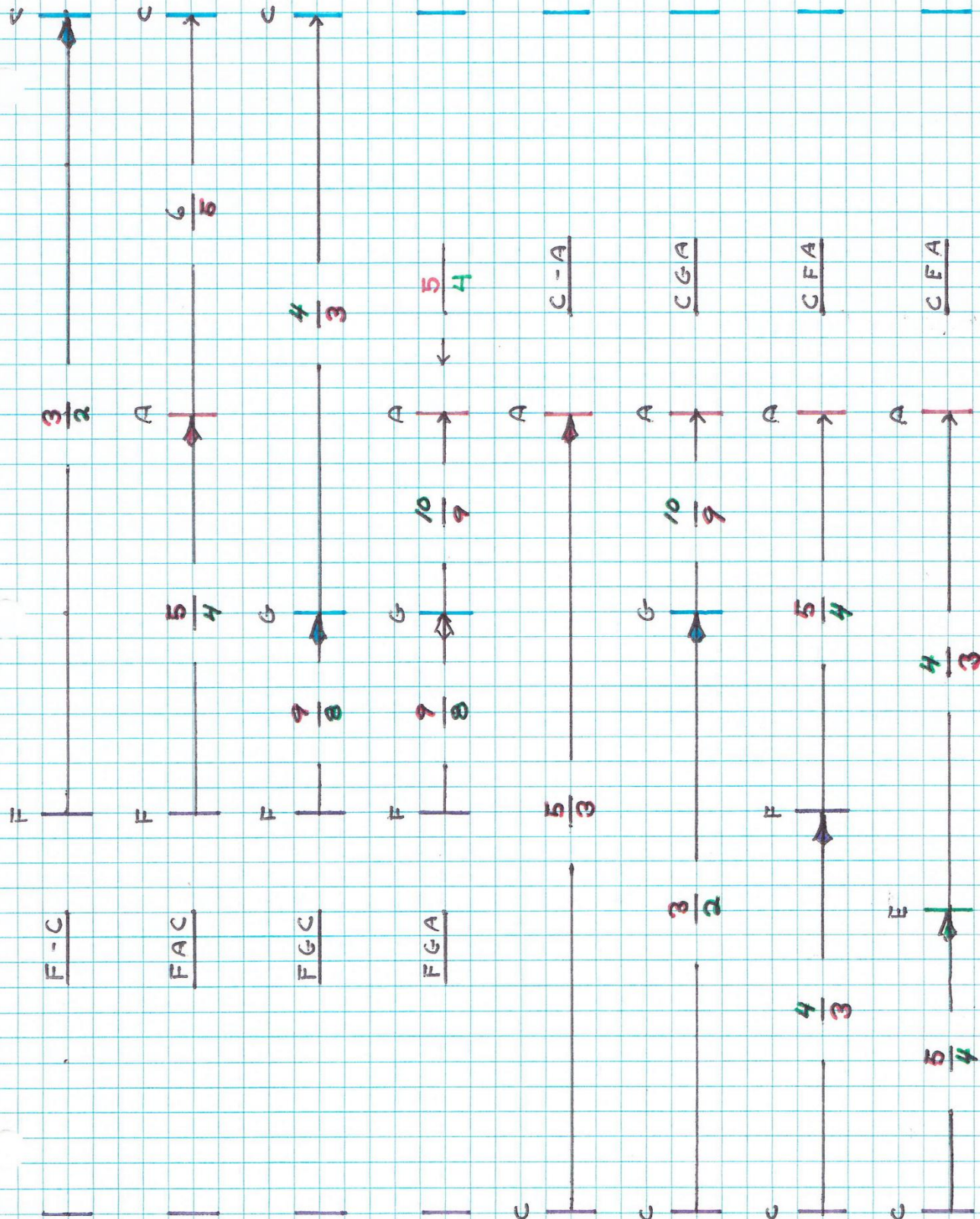


Fig - 4

4

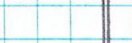
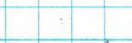
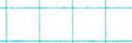
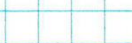
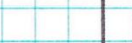
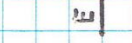
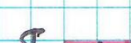
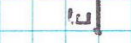
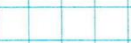
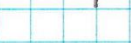
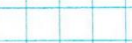
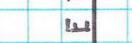
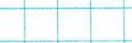
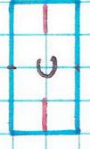
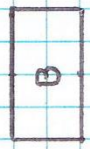
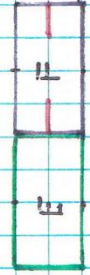
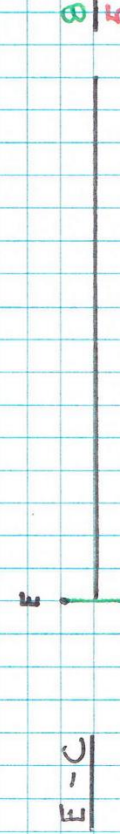
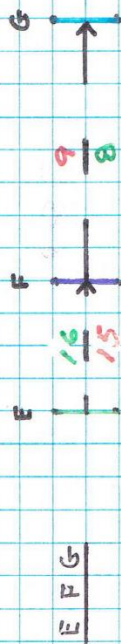
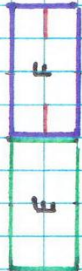


FIG 6A

5





C

$\frac{3}{3}$

A

C - A

C

$\frac{3}{3}$

G

A

$\frac{10}{9}$

C GA

F

$\frac{6}{5}$

G

A

$\frac{10}{9}$

E GA

F

$\frac{9}{8}$

G

A

$\frac{10}{9}$

F GA

C

$\frac{6}{5}$

G

A

$\frac{10}{9}$

C

C

$\frac{4}{3}$

G

A

$\frac{4}{3}$

C



$$\frac{3}{2}$$



$$\frac{C-G}{}$$



$$\frac{4}{3}$$



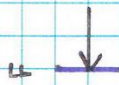
$$\frac{9}{8}$$



$$\frac{C-F-G}{}$$



$$\frac{F-G-A}{}$$



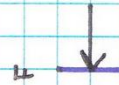
$$\frac{9}{8}$$



$$\frac{10}{9}$$



$$\frac{F-G-C}{}$$



$$\frac{9}{8}$$



$$\frac{4}{3}$$



$$\frac{F-C}{}$$

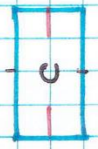
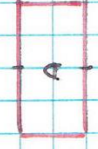


$$\frac{3}{2}$$

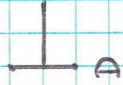


17/6 - 12

3



$$\frac{D-F}{C}$$



$$\frac{5}{4}$$



$$\frac{G-B}{C}$$

$$\frac{D-G}{C}$$



$$\frac{4}{3}$$



$$\frac{4}{3}$$



$$\frac{405}{288}$$



$$\frac{G-B}{C}$$

$$\frac{D-A-C}{C}$$



$$\frac{40}{27}$$



$$\frac{6}{12}$$



$$\frac{3}{2}$$



$$\frac{5}{3}$$



SECTION 3

NUMERICAL PLAN

$2/1$		↓	$5/4$		↓
<u>CFC</u>	$\frac{4}{3} \times \frac{3}{2} = \frac{12}{6}$		<u>FGA</u>	$\frac{9}{8} \times \frac{10}{7} = \frac{90}{72}$	
<u>CGC</u>	$\frac{3}{2} \times \frac{4}{3} = \frac{12}{6}$		$6/5$		↓
<u>CFC</u>	$\frac{5}{4} \times \frac{8}{5} = \frac{40}{20}$		<u>FFG</u>	$\frac{16}{15} \times \frac{9}{8} = \frac{144}{120}$	
<u>CAC</u>	$\frac{5}{3} \times \frac{6}{5} = \frac{30}{15}$		$8/5$		↓
$5/3$		↓	$8/5$		↓
<u>CFA</u>	$\frac{5}{4} \times \frac{4}{3} = \frac{20}{12}$		<u>FAC</u>	$\frac{4}{3} \times \frac{6}{5} = \frac{24}{15}$	
<u>CFA</u>	$\frac{4}{3} \times \frac{5}{4} = \frac{20}{12}$		<u>FGC</u>	$\frac{6}{5} \times \frac{4}{3} = \frac{24}{15}$	
<u>CGA</u>	$\frac{3}{2} \times \frac{10}{9} = \frac{30}{18}$		<u>FFC</u>	$\frac{16}{15} \times \frac{3}{2} = \frac{48}{30}$	
$4/3$		↓	$3/2$		↓
<u>CFF</u>	$\frac{5}{4} \times \frac{16}{15} = \frac{80}{60}$		<u>CFG</u>	$\frac{4}{3} \times \frac{9}{8} = \frac{36}{24}$	
<u>FFA</u>	$\frac{16}{15} \times \frac{5}{4} = \frac{80}{60}$		<u>FEC</u>	$\frac{9}{8} \times \frac{4}{3} = \frac{36}{24}$	
<u>FGA</u>	$\frac{6}{5} \times \frac{10}{9} = \frac{60}{45}$		<u>CFG</u>	$\frac{5}{4} \times \frac{6}{5} = \frac{30}{20}$	
<u>GAC</u>	$\frac{10}{9} \times \frac{6}{5} = \frac{60}{45}$		<u>FAC</u>	$\frac{5}{4} \times \frac{6}{5} = \frac{30}{20}$	

$$\underline{EGA} \quad \frac{6}{5} \times \frac{10}{9} = \frac{60}{45} = \frac{4}{3}$$

$$\underline{GAC} \quad \frac{10}{9} \times \frac{6}{5} = \frac{60}{45} = \frac{4}{3}$$

$$\underline{CEF} \quad \frac{5}{4} \times \frac{16}{15} = \frac{80}{60} = \frac{4}{3}$$

$$\underline{EFA} \quad \frac{16}{15} \times \frac{5}{4} = \frac{80}{60} = \frac{4}{3}$$

$$\underline{CAC} \quad \frac{5}{3} \times \frac{6}{5} = \frac{30}{15} = \frac{2}{1}$$

$$\underline{CGA} \quad \frac{3}{2} \times \frac{10}{9} = \frac{30}{18} = \frac{5}{3}$$

$$\underline{CFC} \quad \frac{5}{4} \times \frac{8}{5} = \frac{40}{20} = \frac{2}{1}$$

$$\underline{EFC} \quad \frac{16}{15} \times \frac{3}{2} = \frac{48}{30} = \frac{8}{5}$$

$$\underline{FGA} \quad \frac{9}{8} \times \frac{10}{9} = \frac{90}{72} = \frac{5}{4}$$

$$\underline{EFG} \quad \frac{16}{15} \times \frac{9}{8} = \frac{144}{120} = \frac{6}{5}$$

$$\frac{CFC}{\quad} \quad \frac{\overset{4}{\cancel{3}}}{\underset{3}{\cancel{2}}} \times \frac{\overset{3}{\cancel{2}}}{\underset{2}{\cancel{3}}} = \frac{12}{6} = \frac{\overset{2}{\cancel{1}}}{\underset{1}{\cancel{3}}}$$

$$\frac{CGC}{\quad} \quad \frac{\overset{3}{\cancel{2}}}{\underset{2}{\cancel{3}}} \times \frac{\overset{4}{\cancel{3}}}{\underset{3}{\cancel{2}}} = \frac{12}{6} = \frac{\overset{2}{\cancel{1}}}{\underset{1}{\cancel{3}}}$$

$$\frac{CEA}{\quad} \quad \frac{\overset{5}{\cancel{4}}}{\underset{4}{\cancel{5}}} \times \frac{\overset{4}{\cancel{3}}}{\underset{3}{\cancel{4}}} = \frac{20}{12} = \frac{\overset{5}{\cancel{3}}}{\underset{3}{\cancel{5}}}$$

$$\frac{CFA}{\quad} \quad \frac{\overset{4}{\cancel{3}}}{\underset{3}{\cancel{4}}} \times \frac{\overset{5}{\cancel{4}}}{\underset{4}{\cancel{5}}} = \frac{20}{12} = \frac{\overset{5}{\cancel{3}}}{\underset{3}{\cancel{5}}}$$

$$\frac{EAC}{\quad} \quad \frac{\overset{4}{\cancel{3}}}{\underset{3}{\cancel{4}}} \times \frac{\overset{6}{\cancel{5}}}{\underset{5}{\cancel{6}}} = \frac{24}{15} = \frac{\overset{8}{\cancel{5}}}{\underset{5}{\cancel{8}}}$$

$$\frac{EGC}{\quad} \quad \frac{\overset{6}{\cancel{5}}}{\underset{5}{\cancel{6}}} \times \frac{\overset{4}{\cancel{3}}}{\underset{3}{\cancel{4}}} = \frac{24}{15} = \frac{\overset{8}{\cancel{5}}}{\underset{5}{\cancel{8}}}$$

$$\frac{CEG}{\quad} \quad \frac{\overset{5}{\cancel{4}}}{\underset{4}{\cancel{5}}} \times \frac{\overset{6}{\cancel{5}}}{\underset{5}{\cancel{6}}} = \frac{30}{20} = \frac{\overset{3}{\cancel{2}}}{\underset{2}{\cancel{3}}}$$

$$\frac{FAC}{\quad} \quad \frac{\overset{5}{\cancel{4}}}{\underset{4}{\cancel{5}}} \times \frac{\overset{6}{\cancel{5}}}{\underset{5}{\cancel{6}}} = \frac{30}{20} = \frac{\overset{3}{\cancel{2}}}{\underset{2}{\cancel{3}}}$$

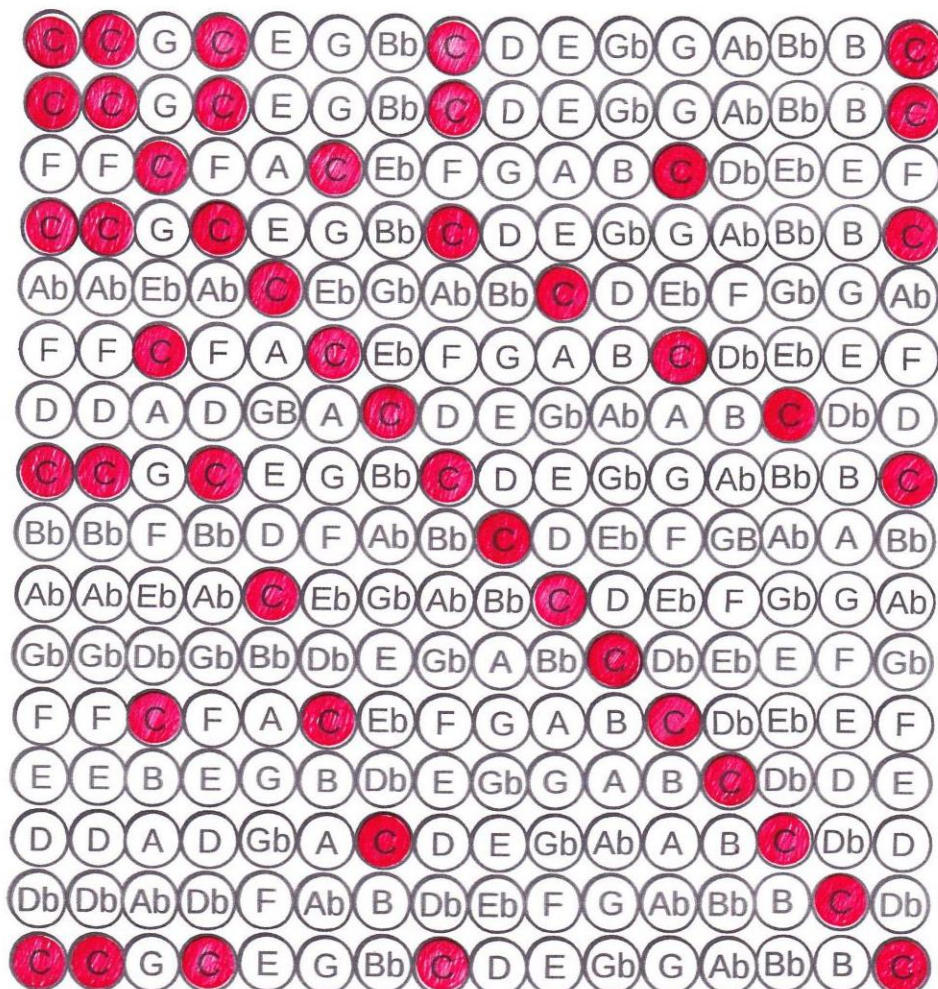
$$\frac{CFG}{\quad} \quad \frac{\overset{4}{\cancel{3}}}{\underset{3}{\cancel{4}}} \times \frac{\overset{9}{\cancel{8}}}{\underset{8}{\cancel{9}}} = \frac{36}{24} = \frac{\overset{3}{\cancel{2}}}{\underset{2}{\cancel{3}}}$$

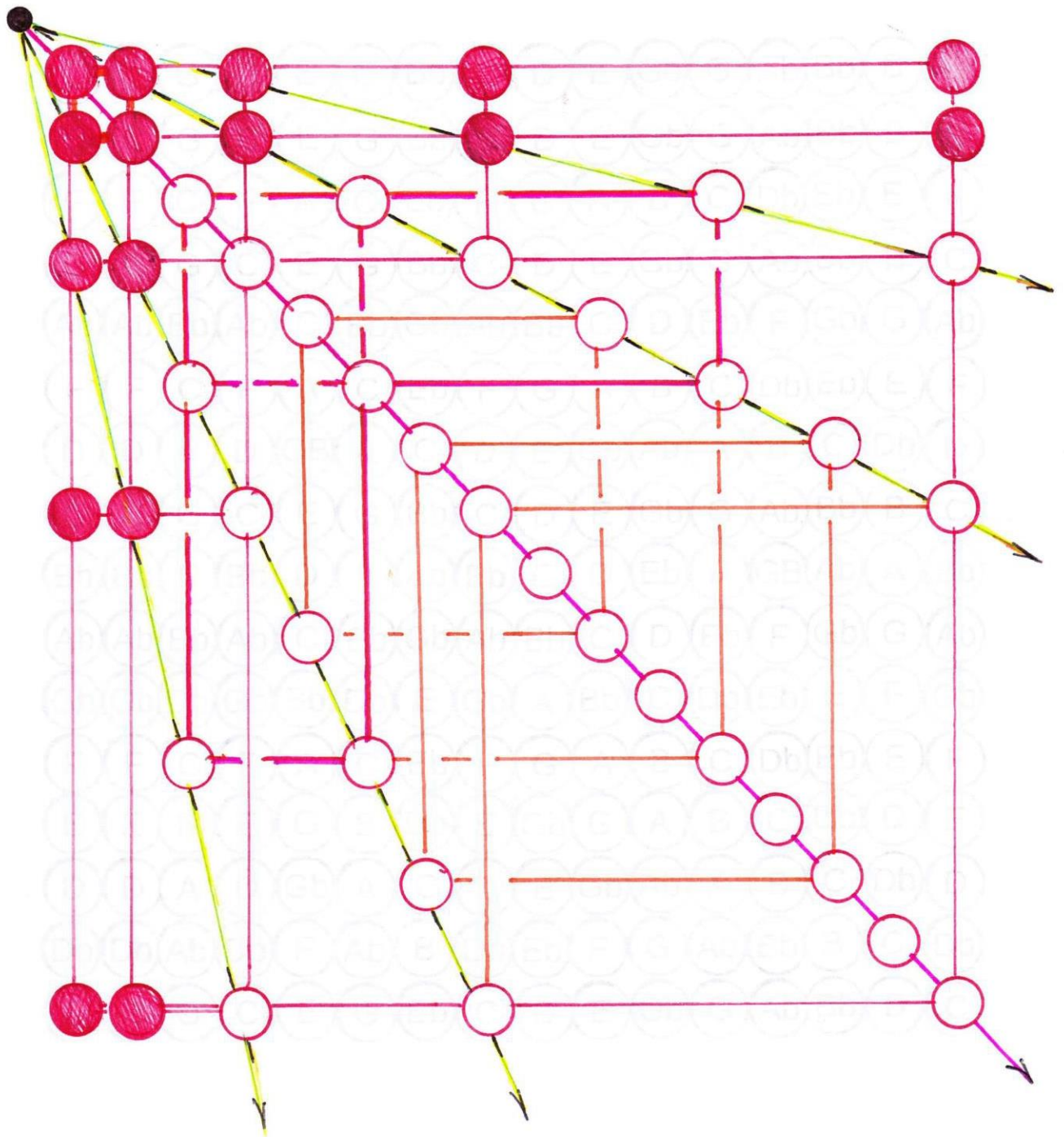
$$\frac{FGC}{\quad} \quad \frac{\overset{9}{\cancel{8}}}{\underset{8}{\cancel{9}}} \times \frac{\overset{4}{\cancel{3}}}{\underset{3}{\cancel{4}}} = \frac{36}{24} = \frac{\overset{3}{\cancel{2}}}{\underset{2}{\cancel{3}}}$$

SECTION 4

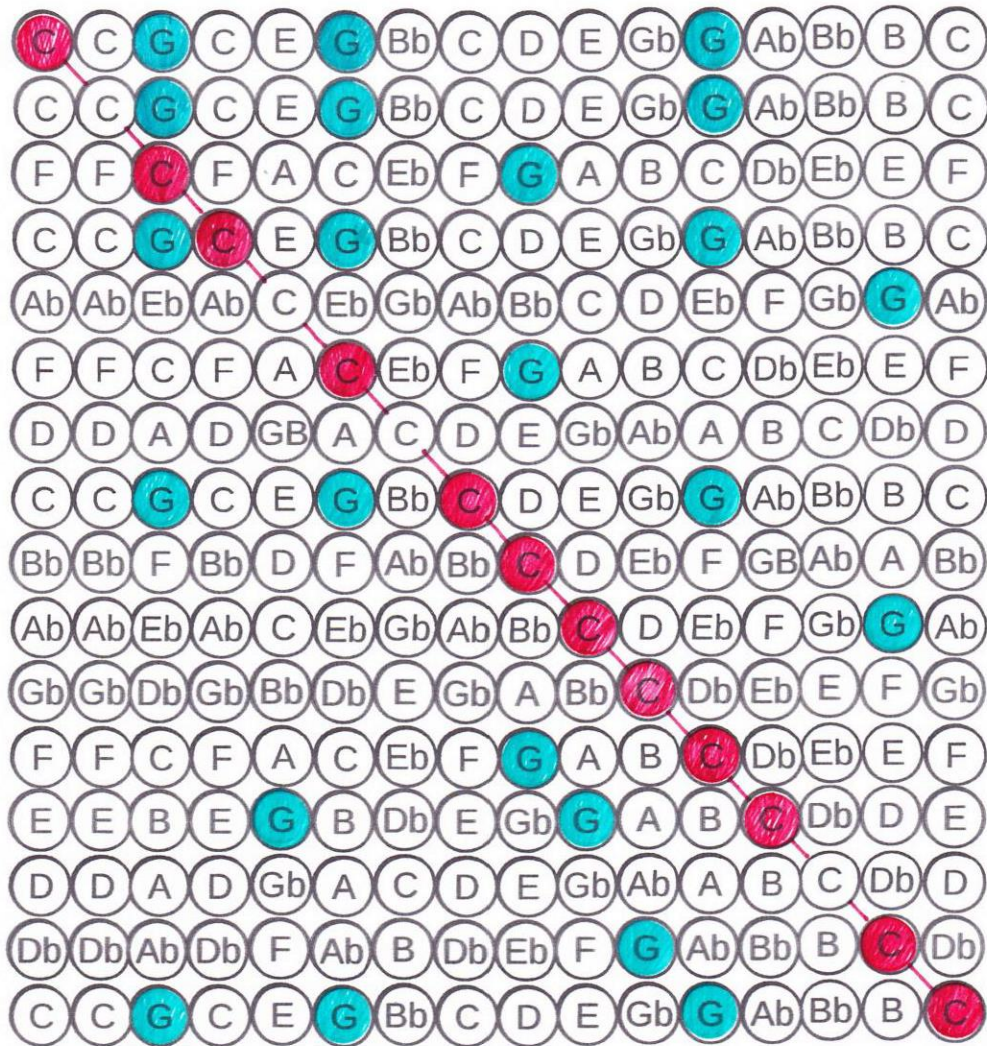
MUSICAL CO-ORDINATE
SYSTEMS IN SPACE
AND COUNTERSPACE

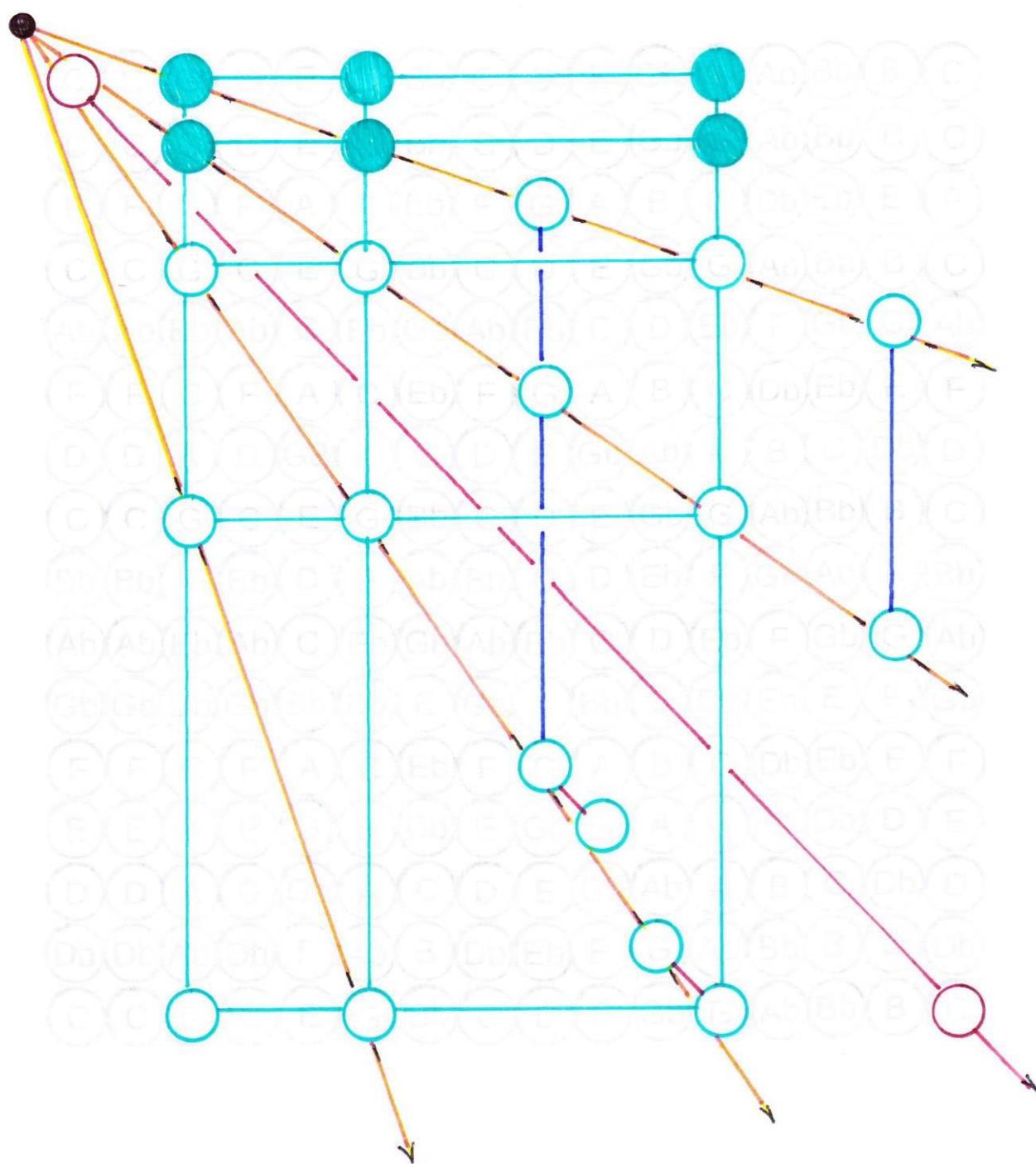
The Octave



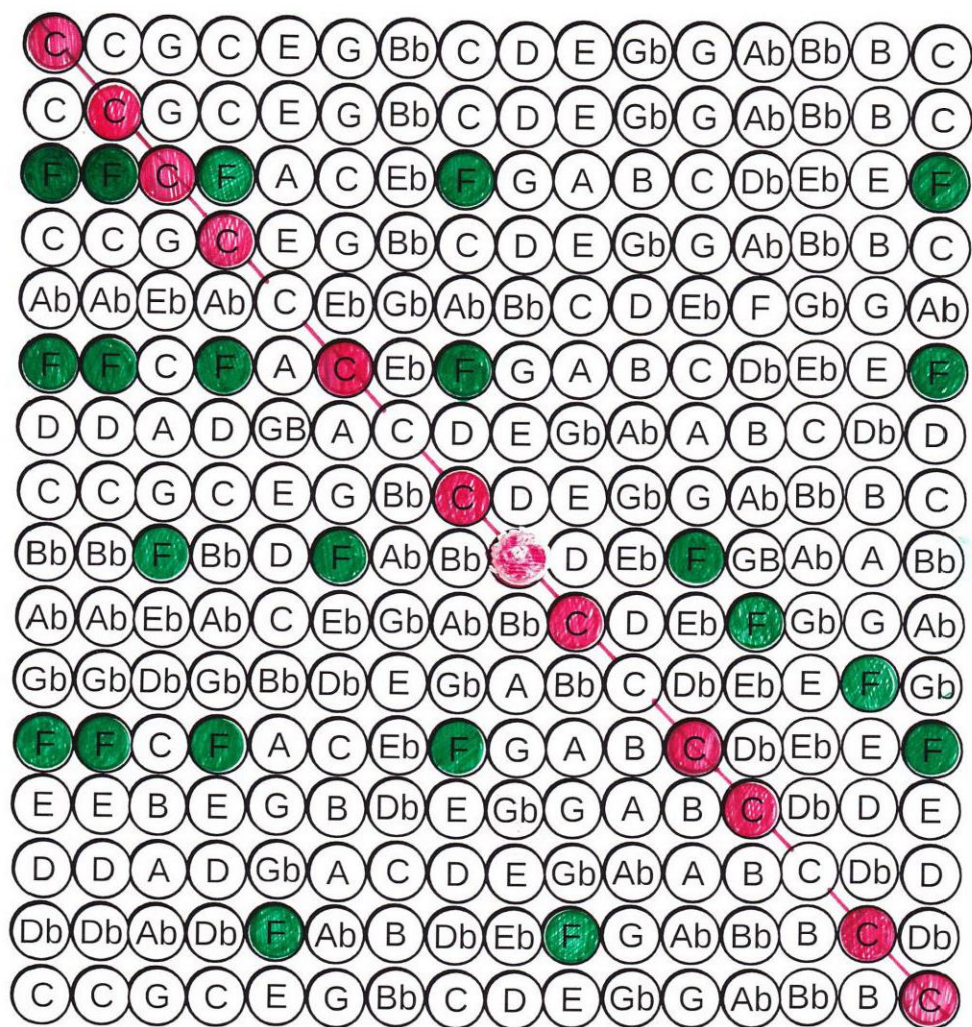


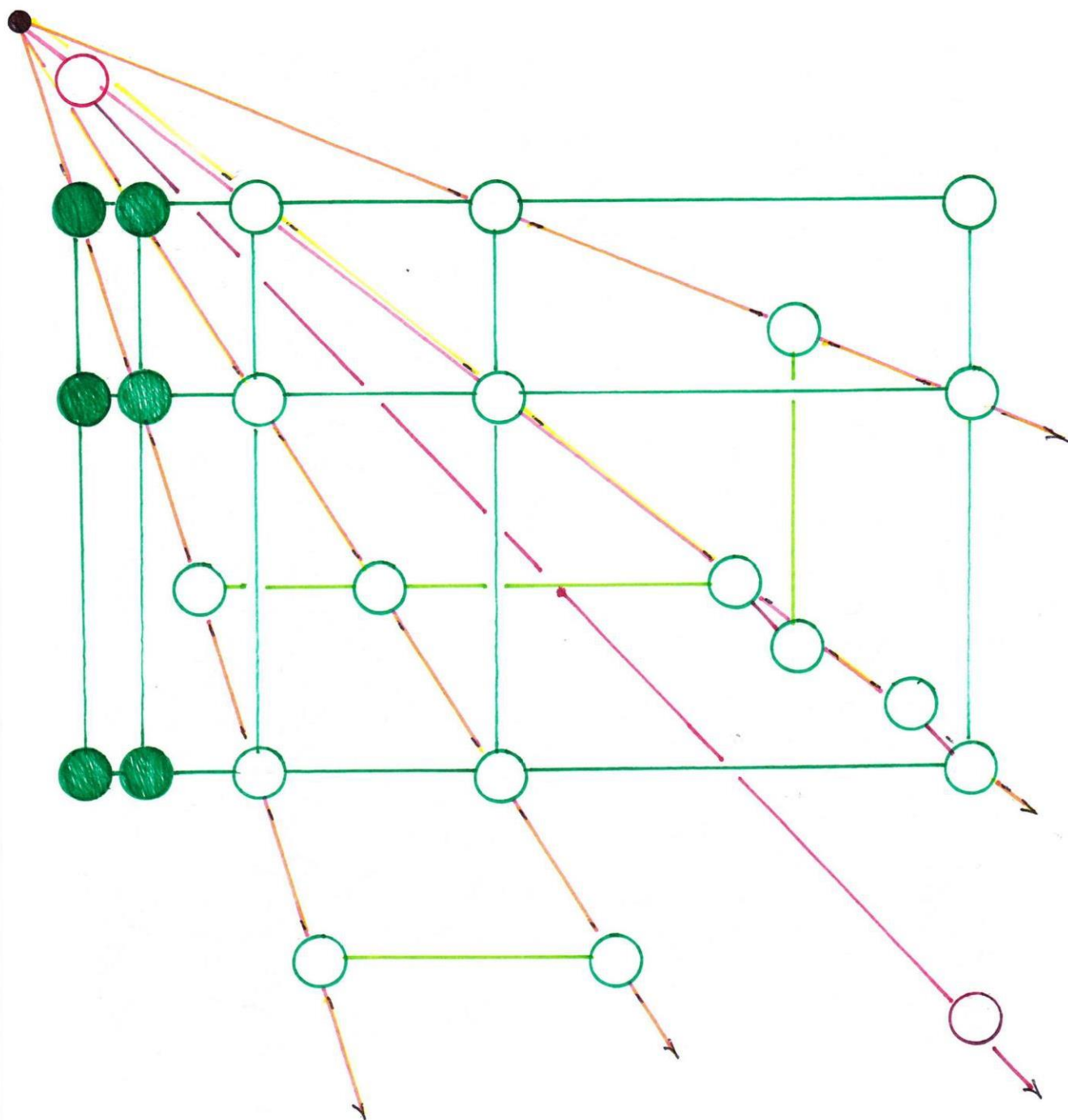
The Fifth

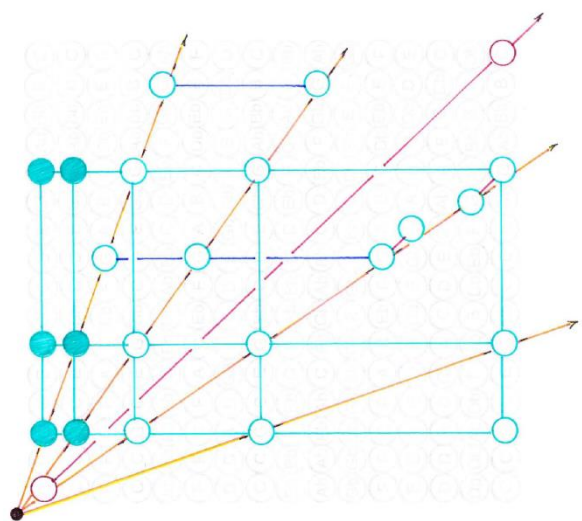
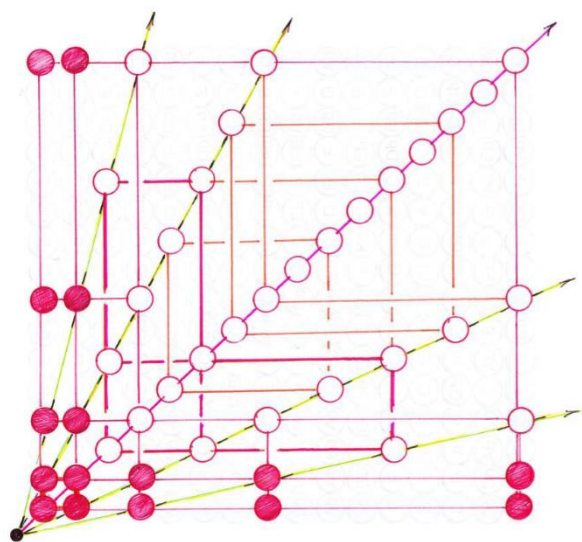
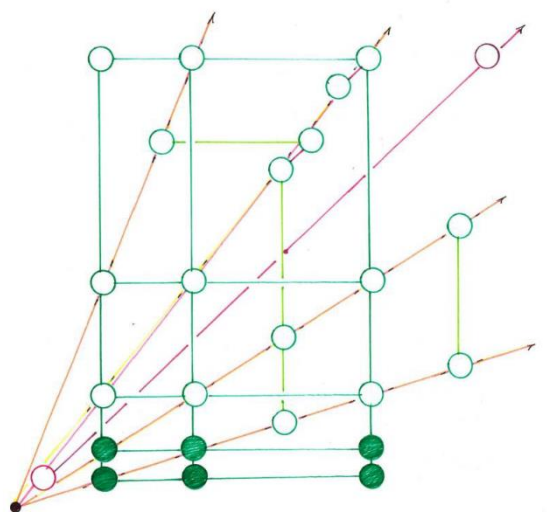




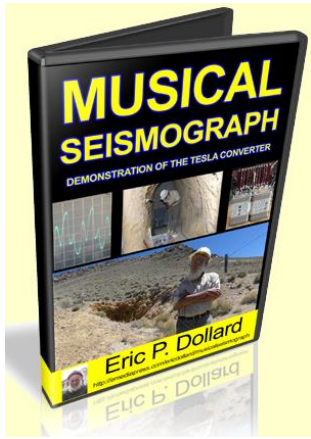
The Fourth







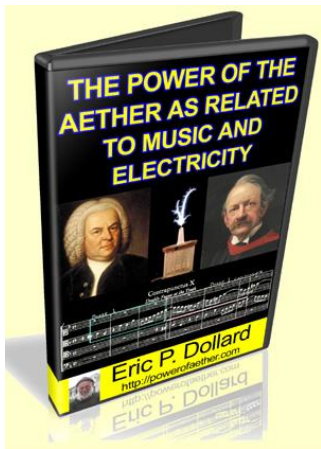
APPENDIX



These images are all explained in Eric Dollard's presentation Musical Seismograph – Demonstration of the Tesla Converter.

Available here:

<http://emediapress.com/ericdollard/musicalseismograph/>



They is also related to Eric Dollard's presentation The Power of Aether as Related to Music and Electricity.

Available here: <http://powerofaether.com/>