

# DEVELOPMENT OF ANTENNA STRUCTURE A52-E

ENGINEERING A52-3



*EPD Laboratories*

**CONFIDENTIAL**

BY ERIC DOLLARD  
MAY 31, 2018

**CONFIDENTIAL**

This report is for internal use only. Not for public distribution.



# DEVELOPMENT OF ANTENNA STRUCTURE A52-E



ENGINEERING REPORT A52-3



A52-E

# ORIGINAL LINE CONDITION







SECURING BROKEN  
OF THE LINE





# TABLE OF CONTENTS

CROSS ARM REPAIR

TERMINAL POLE CONNECTIONS

CROSS ARM REPLACEMENT

INPUT POLE

TERMINAL TEST



A52-E

PROJECTS BEGINS





TERMINAL POLE

# CROSS ARM REPAIR







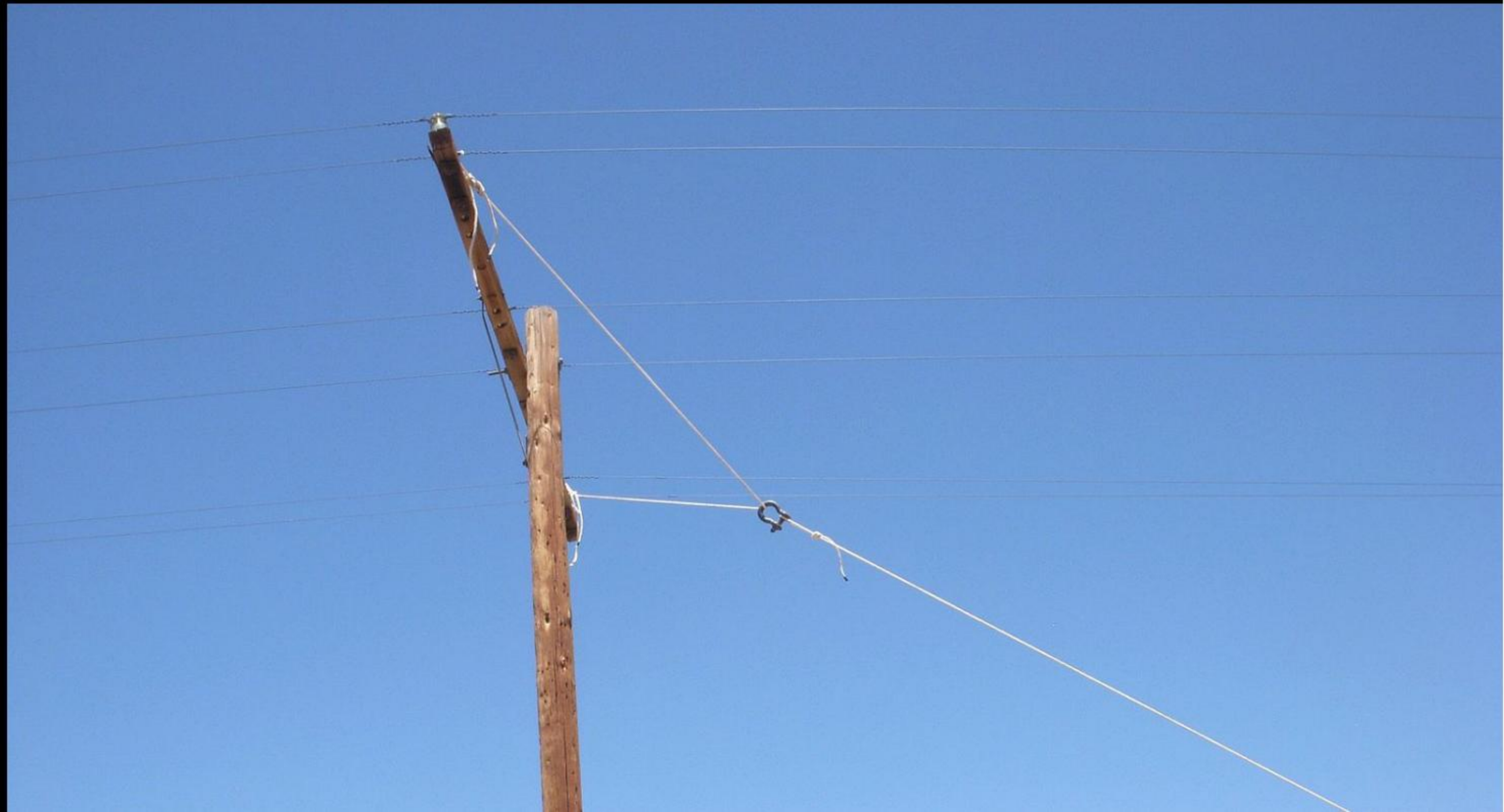
## REMOVING BROKEN ARMS





CROSS ARM REPAIR

TAKING UP DEAD END LOAD ON ADJACENT POLE





# TAKING UP DEAD END LOAD ON ADJACENT POLE





## CROSS ARM REPAIR



DETACHING DEAD  
ENDED CONDUCTORS





CROSS ARMS REMOVED





CROSS ARM REPAIR

CONSTRUCTING NEW DEAD ARM ASSEMBLY





# CONSTRUCTING NEW DEAD ARM ASSEMBLY







CROSS ARM REPAIR HARDWARE



# INSTALLING NEW ARMS







CROSS ARM REPAIR INSTALLING NEW ARMS



FINISHED REPAIR





# TERMINAL POLE CONNECTIONS



DRIVING  
GROUND  
RODS







BURYING  
GROUND  
CONDUCTORS







# TERMINAL POLE CONNECTIONS CONNECTING MEASURING SET





CORNER POLE

# CROSS ARM REPLACEMENT





# DETACHING LINE CONDUCTORS FROM BROKEN ARMS





CROSS ARM REPLACEMENT  
REMOVE DEFECTIVE ARMS





# REPLACEMENT ARM ASSEMBLY





# CROSS ARM REPLACEMENT FINALIZING REPLACEMENT ARMS





# POSITIONING ARM CONDUCTORS





CROSS ARM  
REPLACEMENT

FINISHED  
CROSS ARM  
REPLACEMENT







FINISHED CROSSARM REPLACEMENT



# CROSS ARM REPLACEMENT REATTACHING CONDUCTORS







REATTACHING  
CONDUCTORS  
TO CROSSARMS





# CROSS ARM REPLACEMENT

## FINISH CROSSARM REPLACEMENT







COMPLETED CORNER POLE



INPUT POLE

# TERMINAL CONNECTIONS





CONDUCTORS TO BE SEGREGATED





TERMINAL CONNECTION  
PULLING IN CONDUCTOR TO  
BE SEGREGATED





# MIDSPAN SEPARATION OF CONDUCTOR





# TERMINAL CONNECTION FINISHING SEPARATION OF CONDUCTOR







ALL CONDUCTORS SEPARATED



# TERMINAL CONNECTION DOWNLEAD WEATHER HEAD



TERMINAL DOWNLEADS  
ATTACHED





FINISHED SEPARATION AND DOWNLOAD  
CONNECTION



INPUT POLE

# TERMINAL TESTS





## GROUND CONNECTION







***EPD Laboratories***

## SPECIAL THANKS / CONTRIBUTIONS

FIELD WORK – JUSTIN MILLER, STEVE YOUNG, RANDALL & RIGGS  
HOHMANN

ADMINISTRATIVE SUPPORT – AARON MURAKAMI  
OF [HTTP://EMEDIAPRESS.COM](http://emediapress.com) & JEFF MOE

THE GLOM-MEISTER, STEVE HILSZ

BROCHURE BY KAREN ELKINS OF [HTTP://  
SCIENCETOSAGEMAGAZINE.COM](http://sciencetosagemagazine.com)

[WWW. ERICPDOLLARD.COM](http://www.ericpdollard.com)